

HOPE IMPACT REPORT

*Cultivating Hope
Since 1988*



White Rock
Center of Hope

2025

Words of Hope

Since 1988, White Rock Center of Hope has been a vital community resource, providing practical support to East Dallas neighbors in need. This year, an unprecedented increase in need challenged Hope and revealed something remarkable: more volunteers, more generosity, and more hope in action than ever before.

This year's growth was extraordinary. Nearly twice as many people as ever before (98% more than the previous record), received help from Hope. This rapid increase builds on five consecutive years of steady growth and was made possible by organizational improvements implemented as part of a multi-year strategic plan.

Some of this year's milestones include:

- **First year offering a Neighbor Choice Food Pantry**, where families can select the foods they need and enjoy.
- **First workforce education programs**, offered through partnerships with CARDBoard Project and R&R Ministries.
- **First refrigerated box truck**, expanding donation pick-up, made possible by a generous North Texas Food Bank grant.

Thank you for standing with Hope. Together, we are transforming lives and strengthening our community every day.

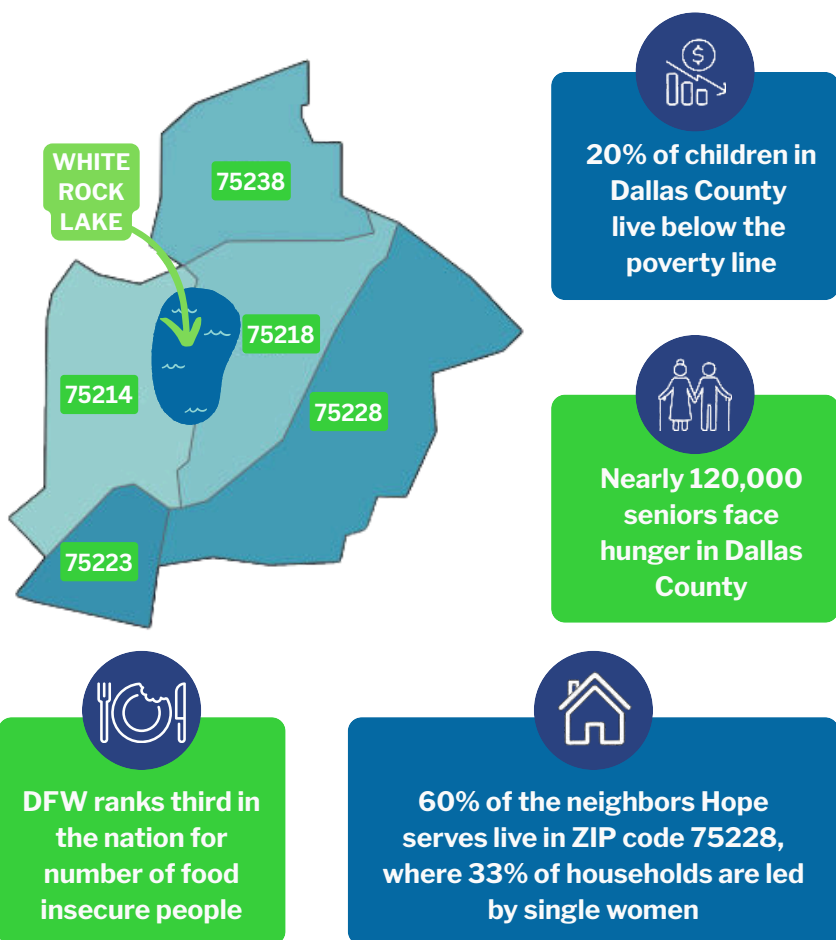


DR. GREG SMITH
CHIEF EXECUTIVE OFFICER

Neighbors

Hope's Primary Service Area: 75214, 75218, 75223, 75228, & 75238

Hope predominantly serves East Dallas communities where the cost of living continues to rise faster than wages. East Dallas is a diverse community of families, seniors, and individuals working to make ends meet.



Programs

White Rock Center of Hope cultivates hope through basic needs and empowerment programs.

Hope's programs are designed to support neighbors with both immediate challenges and long-term stability.



**Food
Pantry**



**Clothing
Closet**



**Financial
Assistance**



**Empowerment
Programs**



“ —

Thank you for treating me with care and making sure I had clothes and food. That is a rare moment for me and many others like me. You have made a big impact in my life. -Jesse

— ”

Neighbor Choice Pantry

Hope completed its first full year as a Neighbor Choice Food Pantry.

This approach allows neighbors to select the food items that best meet their needs, preferences, and dietary restrictions. By offering choice, Hope reduces food waste, increases dignity, and provides families with food they will use.



“

I was amazed at how comfortable everyone made me feel in the Food Pantry. They helped me through my first shopping experience and all the wonderful things that I got for my family. All in all, I was stunned.

-Anna

”



Basic Needs

A record 14,664 unique people received help in the form of food, clothing, and financial assistance

Of those served



36%
Children



16%
Seniors (+60)

98% more neighbors were served than any year in Hope's history



\$86,611
provided in rent or
utilities for 542
people



**+32% increase from
the previous year**

1,017,401
pounds
of food
distributed



**+ 17% increase from
the previous year**

90,823
articles of
clothing
distributed

Empowerment

Empowerment is Hope's newest program, designed to help neighbors achieve lasting stability. A total of 611 participants benefited from this program, a 69% increase over the previous year.



Career and Life Skills Training



**Digital
Literacy
Certificate**



**Job Skills
Training**



**Resume
Building
Workshop**



**Financial
Literacy**

Thrift Store

Shop

Shopping at the Hope Thrift Store directly supports Hope's programs and services.

Every purchase helps fund food assistance, empowerment, and Hope's operations.



Donate

Donating your gently used clothing and household items helps ensure nothing usable goes to waste.

Donated goods help stock the store and generate revenue. Items like home décor, furniture, and housewares are always appreciated.

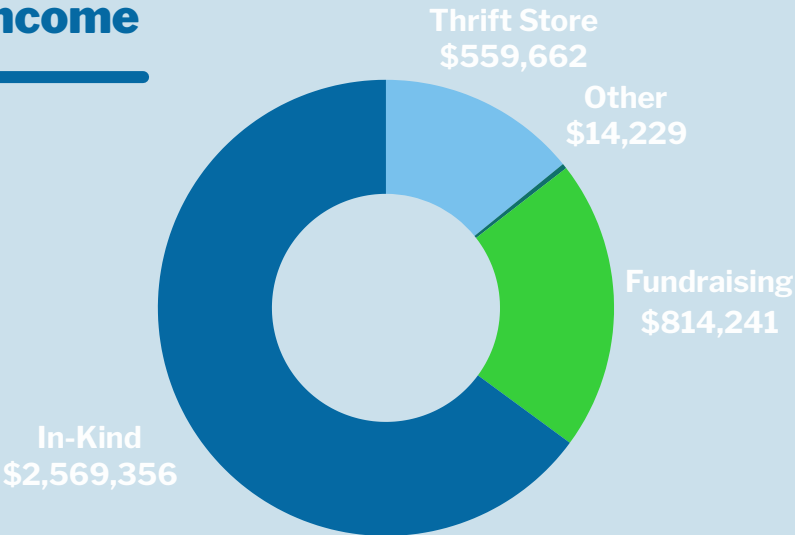
Open: Monday - Saturday
9:00 am - 5:00 pm



Financials

Unaudited financials for the fiscal year (FY) ending October 31, 2025, feature income of \$3,957,488 and expenses of \$3,863,962

Income



Fundraising comprised of

Individuals & Businesses: 50% | \$410,748
Foundations: 35% | \$282,662
Churches: 15% | \$120,831

Expenses

Program Services: 92% | \$3,550,547
Fundraising: 5% | \$182,371
Management & General: 3% | \$131,044



Volunteers

White Rock Center of Hope is made possible by neighbors volunteering to help neighbors, six days a week. We have room for you!



1,550 Individual Volunteers

The largest number of volunteers ever, included children as young as 3 to people in their 90s



33,435 Hours Volunteered

People serve weekly, monthly, and as time allows
Opportunities available Monday through Saturday



\$1,163,204 Dollars Saved*

Each hour volunteered makes a real difference

**Not included in financials*



Board of Directors

FY 2026 Officers

Pat Hadaway, *Chair*

Veda Shaw, *Treasurer*

Rev. Jonathan Melton, *Vice Chair*

David Cossum, *Secretary*

Michael DeGroat, *Past Chair*



FY 2026 Directors

Linda Hale, Esq. - Mary Anne Hifler - Julie Keith - J. R. Ratliff

Michael Stettler, CPA - Scott Storm - Staci Stovall - Vickie Wright

Senior Staff



Dr. Greg Smith

Chief Executive
Officer



Kimberly Patterson

Senior Director of
Development



Kaylan VanPelt

Director of
Neighbor Services



Sandy Anderson

Director of
Operations

WHITE ROCK CENTER OF HOPE

Cultivating hope
through basic needs and
personalized empowerment



Contact

Dr. Greg Smith
Chief Executive Officer
greg@whiterockcenterofhope.org
214.328.2978

Kimberly Patterson, CFRE
Senior Director of Development
and Communications
kimberly@whiterockcenterofhope.org
469.240.1826

Connect



10021 Garland Rd., Dallas, Texas 75218
www.whiterockcenterofhope.org